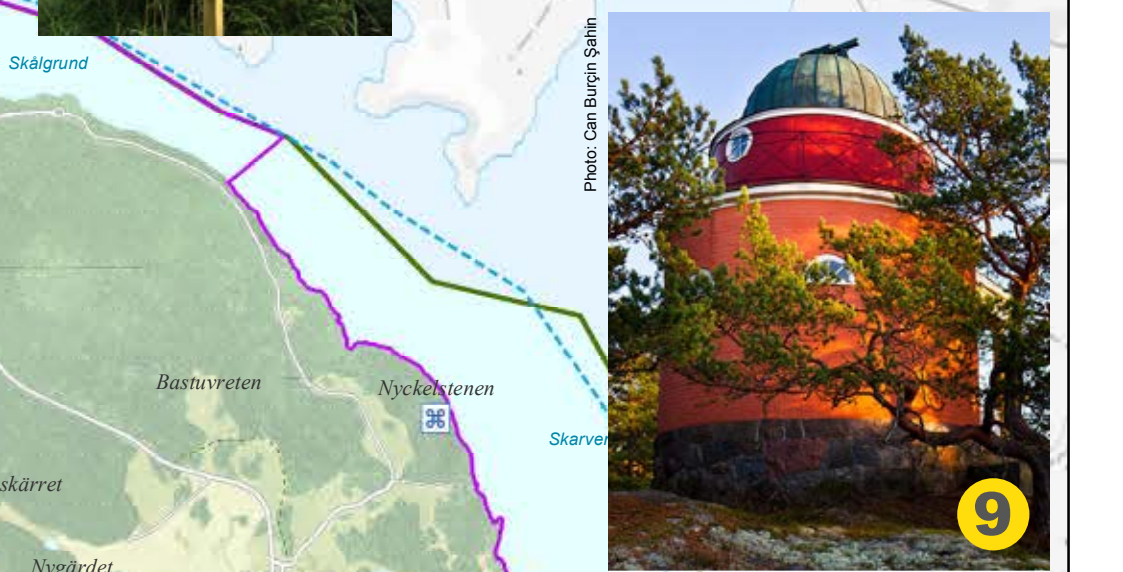


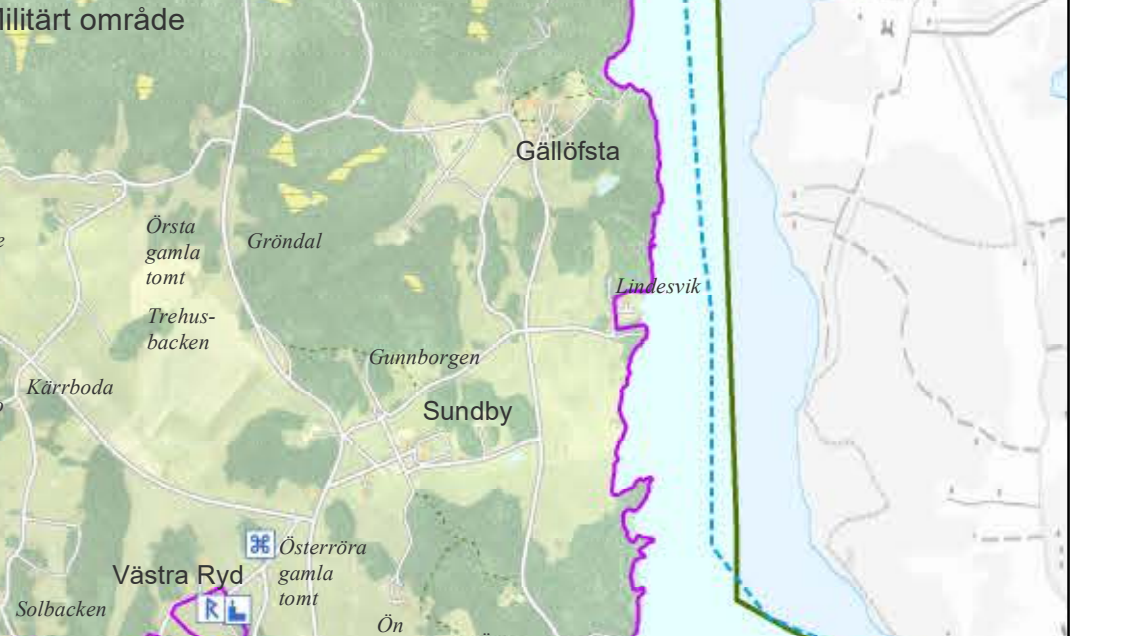


Tourist and leisure map

UPPLANDS-BRO TRAIL
 Upplands-Bro Trail runs from Bro via Kungsängen to the Jarfalla border. The trail, which is 29 kilometres long, winds its way through a very varied landscape. The hike offers many beautiful experiences regardless of the time of year.



KVISTABERG
 Kvistaberg Observatory is the oldest working observatory in Stockholm county, and is still situated in the location where it was constructed. It is a well-preserved site which has retained the character of its early 1900s origin.



GOLF COURSES
 Upplands-Bro offers a number of opportunities to play golf. Here on the map you will find Bro-Bälsta Golfklubb, Kungsängens Golf Club, Sofielunds Golfklubb and Bro Hof Slott.



PUBLIC ART
 In Upplands-Bro, interesting art is always just around the corner. Trashstone 601 och 602 stands in front of Kulturhuset in Kungsängen (Wilhelm Mundt). La Culture – C'est moi! (Culture – It's me!) is located below the town square in Kungsängen (Carl Fredrik Reuterswärd). Björkback stands on Kungsängens town square (Roland Haeberlein). Flöjtspelerska is positioned on the town square in central Bro (Thomas Qvarsebo). Spiders from Mars is found in Kulturhuset in Kungsängen (Anna Svensson). Ananaspiggare och Kvasstefening are located on Bro town square (Olle Brandt). More information at www.upplands-bro.se/kultur



Upplands-Bro municipality – in the heart of the Mälaren Valley

Upplands-Bro has some of the most beautiful nature that Greater Stockholm's municipalities have to offer. The welcoming, varied and accessible landscape, with large, untouched nature areas and preserved ancient monuments, offers a wealth of opportunities for an active life. Here you will find a rich heritage stretching back several millennia, with exciting developments ahead.

The large rural district of Upplands-Bro was formed on 1 January 1952 when the parishes of Stockholms-Näs, Västra Ryd, Håbo-Tibble, Håtuna and Bro-Låssa were consolidated. The municipality is home to two major urban areas, Bro and Kungsängen, where childcare, schools and elderly care are well developed.

Upplands-Bro offers many opportunities for those who are interested in outdoor activities, nature and culture whilst retaining a desire to be close to the big city. The municipality is also home to a wealth of club activities which satisfy most areas of interest.

With pedestrian and cycle routes, you can easily find your way to beautiful nature, interesting cultural environments, viewpoints and sports facilities.

Visiting address: Furuålsplan 1, Kungsängen
Postal address: Upplands-Bro kommun, 196 81 Kungsängen
E-mail: kommun@upplands-bro.se
Tel: 08-581 690 00
Fax: 08-581 692 40
www.upplands-bro.se



Tourist and leisure map
 Approved for dissemination from a confidentially viewpoint © Anammariet, Geodata Collaboration
 Tourist and leisure map produced in June 2017 by Upplands-Bro municipality.
 Community Development Office, Telephone number: Upplands-Bro municipality +46 (0) 8-581 699 00
 Project Manager and map: Sofie Lagerstedt
 Print: Eldanders 2017
 Want to know more about Upplands-Bro?
 www.upplands-bro.se, kommun@upplands-bro.se



The Ekhammar figurine
 The bronze Ekhammar figurine was found in 1968 at the dig by the motorway exit in Brunna, one kilometre north of Ekhammar Manor. The symbol is now used as Upplands-Bro municipality's coat of arms.

Key	Symbol	Description
Figures	Yellow circle	Figures
Road barrier	Blue rectangle	Road barrier
Parking	Blue square	Parking
Parking and disabled parking	Blue square with P	Parking and disabled parking
Library	Blue square with book	Library
Bus	Blue square with bus	Bus
Bus stop	Blue square with bus and stop	Bus stop
Commuter train station	Blue square with train	Commuter train station
Rubbish collection	Blue square with trash	Rubbish collection
Dry toilet/WC	Blue square with toilet	Dry toilet/WC
Recreating centre	Blue square with person	Recreating centre
Bathing area	Blue square with person in water	Bathing area
Barbecue	Blue square with grill	Barbecue
Windbreak	Blue square with windbreak	Windbreak
Marina	Blue square with boat	Marina
Guest harbour	Blue square with boat and person	Guest harbour
Rune stones	Blue square with runic text	Rune stones
Ancient monument	Blue square with monument	Ancient monument
Church	Blue square with church	Church
Viewpoint	Blue square with person looking	Viewpoint
Berthing/lodging tower	Blue square with tower	Berthing/lodging tower
Playground	Blue square with play equipment	Playground
Skatepark	Blue square with skateboard	Skatepark
Boules	Blue square with boules	Boules
Frisee golf	Blue square with golf ball	Frisee golf
Beach volleyball court	Blue square with volleyball net	Beach volleyball court
Footpath/tractor road	Dotted line	Footpath/tractor road
Nature trail	Yellow line	Nature trail
Upplands-Bro Trail	Orange line	Upplands-Bro Trail
Bicycle path	Green line	Bicycle path
Road connection, Street	Red line	Road connection, Street
Area of national interest for the Swedish Total Defense	Red dashed line	Area of national interest for the Swedish Total Defense
Nature reserve	Green dashed line	Nature reserve
Natura 2000	Yellow dashed line	Natura 2000
Upplands-Bro municipal border	Green solid line	Upplands-Bro municipal border
Development, Residential	Light green	Development, Residential
Development, Industrial	Light blue	Development, Industrial
Open land	Light yellow	Open land
Woodland	Light green	Woodland
Water	Blue	Water

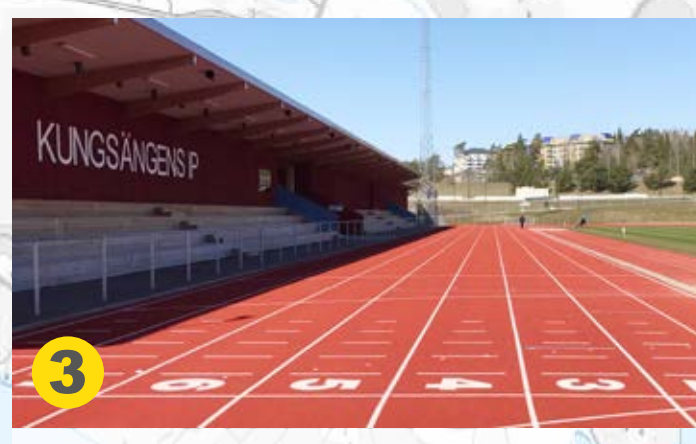
Skala 1:36 000
 0 500 1 000 2 000 Meter



RÖSARING
 At Rösaring, you will find a number of unusual ancient monuments which show us that the site was used for religious ceremonies; perhaps during both the Bronze Age and Iron Age. The reason this site was chosen was likely its high elevation, meaning it was visible from afar.



HORSE RACING
 Onsta Manor in Bro is home to Svensk Galopp's new facility Bro Park race course, inaugurated in 2016. This is central Sweden's new centre for horse racing.



KUNGSÄNGEN SPORTS GROUNDS
 A modern sports facility in Gröna Dalen, south of the E-18, Kungsängen IP (sports grounds) is home to five full-size football pitches, three with natural grass and two with artificial turf. There is also an artificially frozen bandy field, athletics fields, service building with cloakroom and cafeteria.



MEDIAEVAL CHURCHES
 Upplands-Bro municipality is home to several mediaeval churches: Bro kyrka, Håtuna kyrka, Låssa kyrka, Håbo-Tibble kyrka, Västra Ryd and Kungsängens kyrka. Håbo-Tibble kyrka features paintings from the time of Albertus Pictor.



BATHING AREAS
 There are six bathing areas under municipal management: Gröna udden, Lillsjöbadet, Stigstorp, Hällkanbadet, Frölundabadet and Vallbyvik. Björknäsbadet is managed by First Camp. A number of the sites have barbecue areas. Lillsjöbadet and Hällkana feature jogging tracks, diving towers, jetties and beach volleyball. Lillsjö also offers frisee golf, a café, food, miniature golf, boules, canoe rental and a bathing ramp for accessibility.



FRÖLUNDA
 Frölunda nature reserve was formed in 2010 in order to preserve a valuable outdoor environment with the lakeside nature characteristic of Mälaren. Here you encounter leafy woodlands rich in berries and mushrooms, and cliffs with small, sandy coves. The area presents an excellent opportunity for a bicycle ride.

NATURAL AREAS

The municipality is home to ten nature reserves, two landscape protection areas and a number of wooded biotope protection areas. Several of the areas also have Natura 2000 protection through the EU. These beautiful, unique natural environments with a high conservation value have been chosen with the purpose of preserving biodiversity.

Broknapparna Nature Reserve/Natura 2000 consists of four small islands in the lakes of Nasfjärden and Brofjärden in Mälaren, 5 km southwest of Kungsängen. The island chain is home to exquisite groves with beautiful flowers and a rich birdlife.

Lejondal Nature Reserve lies in a beautiful environment with pastures bordering Lake Lejondal. Hällkarna outdoor recreation centre, with its bathing areas and jogging tracks, is located here. Protected ancient woodland is situated adjacent to the reserve.

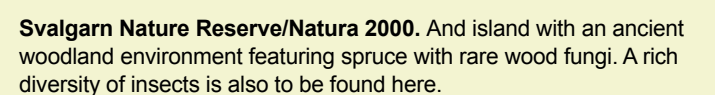
Norra Björkfjärden Nature Reserve/Natura 2000. The reserve is home to an archipelago of 22 islands, where a broad-leaved deciduous forest featuring a number of conifers grows here. The rich insect life means there is also a rich birdlife. The sandy islands are part of Uppsalälvs.

Stäketskogen Nature Reserve is preserved for its ancient woodland environment with pines as much as 500 years old. The area is unique, with its primeval forest and its position close to Kungsängen town centre.

Adö-Lagö Nature Reserve features an area of broad-leaved deciduous forest of national importance, known especially for its mistletoe. The environment promotes rare insect life and avifauna. The meadows bordering Mälaren are grazed.

Lilla Ulifjärden is a unique cove of Mälaren with rare species dating back to the Ice Age. Surrounding the cove is a very beautiful landscape.

Broängarna Nature Reserve/Natura 2000 boasts a richer birdlife than most other areas of Stockholm county, with some 225 species observed. Beautiful grazed lakeside meadows and birdwatching towers await.



Svalgarn Nature Reserve/Natura 2000. And island with a rich woodland environment featuring spruce with rare wood fungi. A rich diversity of insects is also to be found here.

Frölund Nature Reserve is home to different types of nature such as wooded mountainsides, rocky beaches and old coniferous forests featuring ancient pines.

Lillsjön-Örnäsåsjön Nature Reserve is a popular recreation and outdoor area. It spans valuable natural environments with beautiful coniferous forests and broad-leaved deciduous forests with hazels. Lillsjön is known for its high nature value.

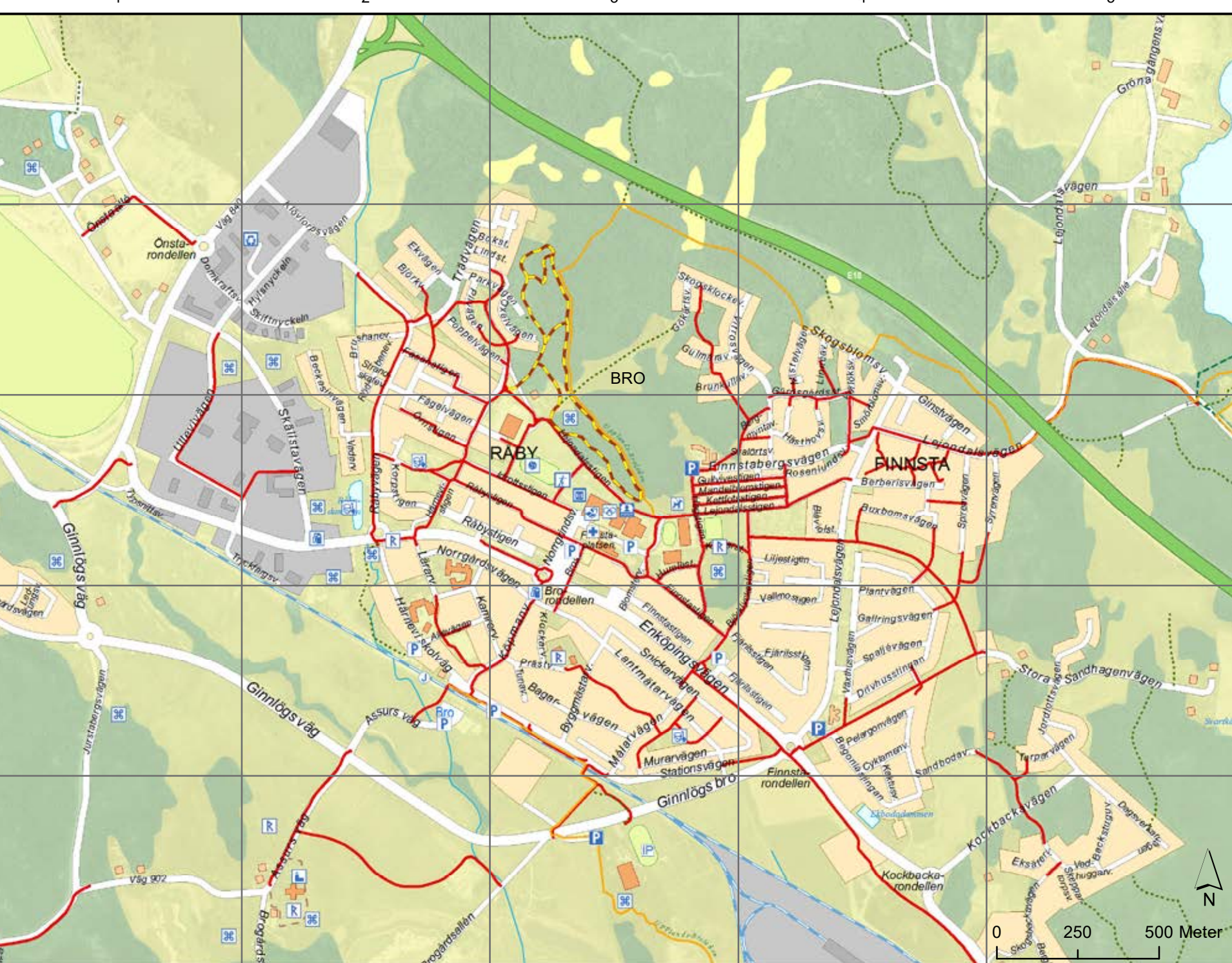
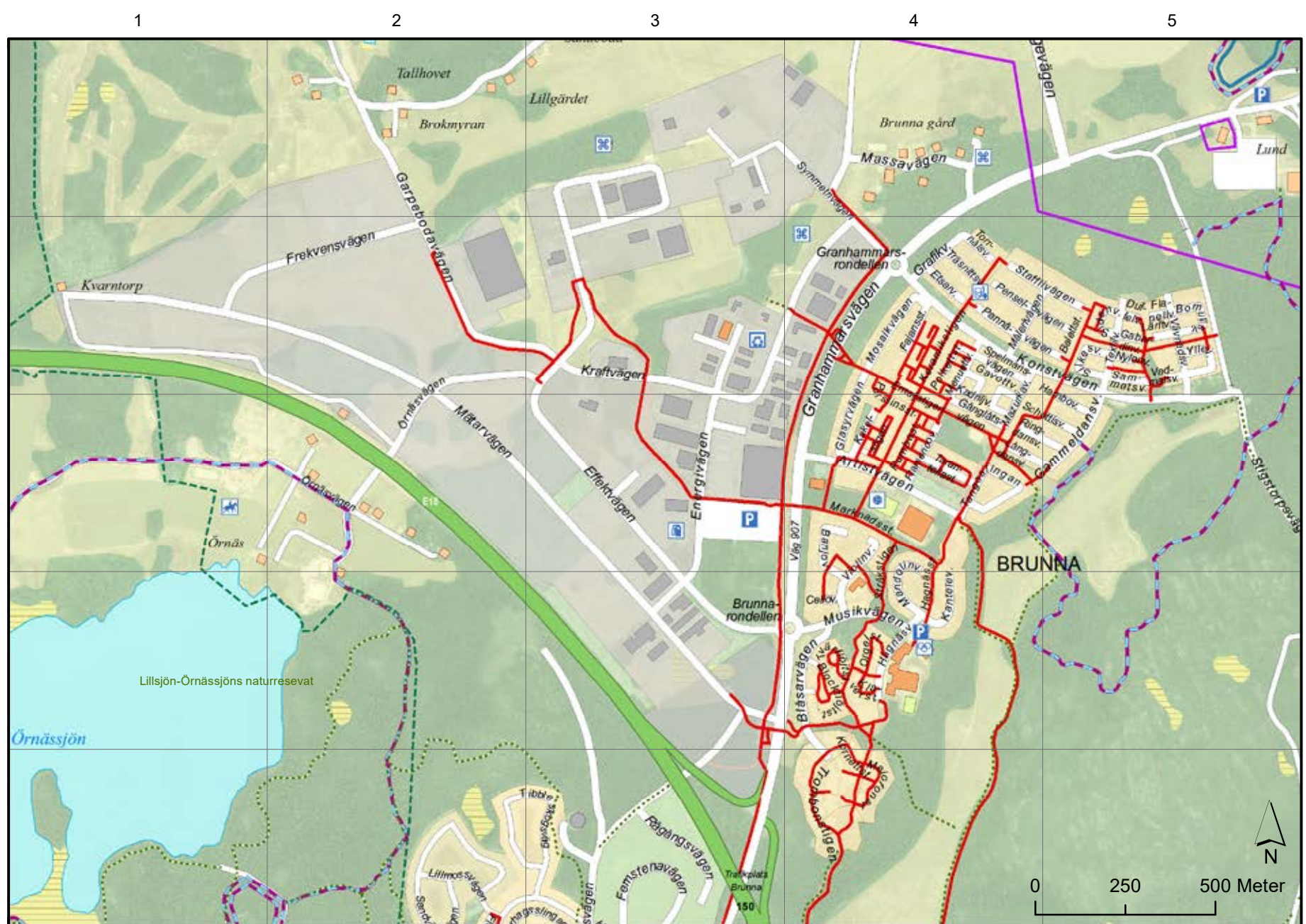
Rösängsåsen Nature Reserve/Natura 2000 encompasses an esker populated by pine forest. Follow the ancient path out to the 'ring' where a beautiful view over Björkfjärden and the islands of Norra Björkfjärden Nature Reserve awaits. Apart from its very high cultural value, the area boasts an interesting insect fauna.

There are also many other **botanical landmarks**, such as the oak hills at Lennartslätt, guinea-hen flower – "Kungsgång lily" (Kungsgångslilja) in Swedish – at Erikssund and Sighildsberg, Erikssund och Sighildsberg, meadows with giant oaks and the beech forest at Stäkön.

BROHUSET AND KULTURHUSET

Brohuset in Bro town centre gathers a number of different activities under one roof. It houses swimming baths with two pools, one 25 metre pool and a warmer teaching pool. The adventure section features two water slides including the super fast "spaceboule". There is also a child lagoon for the littler ones. Other activities on offer are water gymnastics, swimming schools, baby swimming and exercise swimming. Brohuset also houses a sports centre, gym with a weight lift section, library and café, Konstklubben as well as Broscenen, a stage for various events.

Kulturhuset in Kungsängen town centre was inaugurated autumn 2014 and is the principal reason why Upplands-Bro municipality was awarded the prize "Kulturtraket" of the year by SVT Kulturmyheter 2016. Kulturhuset houses an art gallery, library, café, art workshop and event stages Stora scenen and Trappan. The current programme can be found at Kulturhuset's website: www.upplands-bro.se/kulturhuset



OUTDOOR ACTIVITIES AND SPORTS

Here are exciting hiking trails, numerous bike paths, winding forest paths, culture environments and beautiful recreation areas with wide-reaching beaches, bathing places and good opportunities for both fishing and bird spotting. Here are world class golf courses, riding schools and sports stables. There are a number of private grounds in the municipality.

The municipality offers the opportunity for sports both indoors and outdoors. Kungsängens IP in Gröna Dalen features football pitches, artificially frozen field, athletics fields, throwing field, service building with changing rooms, sauna and café. At Bro IP there is an indoor football pitch, grass and artificial turf pitches and changing pavilion. We can also offer a baseball field, beach volleyball court, archery range, frisbee golf course, air gun hall, tennis courts, skateboard ramps and boxing gym. The municipality also has running trails and illuminated running tracks with service buildings and shower facilities. Contact the municipality if you want to book sport halls for activities.

During winter you can skate in trail of Vikings (Vikingsalingen and Vikingarännan). When weather allows there will also be ice trails cleared of snow on the lakes Lejondalsjön (Hällkarna) 3 km and Lillsjön, 2.5 km. If you want to go cross-country skiing there are several illuminated and prepared tracks. Malarälvsleden is a tourist cycle route that runs through our municipality and continues around lake Mälaren. Ryssgravsklippan is now a popular spot for rock climbers. The municipality has no liability for the activities.

A	Artistvägen C4	Gammeldansvägen C5	M	Mandelönsvägen C4	S	Stigstrevägen C5
B	Balgstigen B5	Garpebodavägen A2	Garpebodavägen B2	Mandelönsvägen D4	Stråkstigen C4	Stråkstigen D4
C	Cellvägen D4	Gavtönsvägen B4	Gavtönsvägen C4	Marknadsvägen A4	Symmetrivägen A4	
D	Duffelvägen B5	Bläckhöjningsvägen D4	Bläckhöjningsvägen D4	Mazarkavägen C4	T	Tangroslinjen C4
E	Effektvägen C3	Blisarsvägen D4	Blisarsvägen D4	Memoetivägen B4	Tarantellastigen C4	
F	Fajansvägen B4	Bomullsvägen B5	Bomullsvägen B5	Mosakavägen B4	Textilvägen B5	
G	Gabardinvägen B5	Brunnarondellen D3	Brunnarondellen D3	Musikvägen D4	Tibble skogsväg E2	
H	Hågastigen C4	C	C	Granhammarsvägen B4	Torrålsvägen B4	
I	Idrottsstigen C3	D	D	Granhammarsvägen C4	Tranbyggevägen A5	
J	Jordlötsvägen D5	E	E	Gängålsvägen C4	Trombostigen E4	
K	Kaktusvägen E4	F	F	O	Tranbyggevägen B4	
L	Landsvägen D2	F	F	O	Tranbyggevägen C4	
M	Malmstigen C2	F	F	O	Tranbyggevägen D4	
N	Norrgrändsvägen C3	F	F	O	Tranbyggevägen E4	
O	Oxelvägen B3	F	F	O	Tranbyggevägen F4	
P	Parkvägen B2	F	F	O	Tranbyggevägen G4	
Q	Q	F	F	O	Tranbyggevägen H4	
R	Råbysvägen C3	F	F	O	Tranbyggevägen I4	
S	Sandbodavägen D4	F	F	O	Tranbyggevägen J4	
T	Torparvägen D5	F	F	O	Tranbyggevägen K4	
U	Ullervägen C1	F	F	O	Tranbyggevägen L4	
V	Vadarsvägen D1	F	F	O	Tranbyggevägen M4	
W	W	F	F	O	Tranbyggevägen N4	
X	X	F	F	O	Tranbyggevägen O4	
Y	Y	F	F	O	Tranbyggevägen P4	
Z	Z	F	F	O	Tranbyggevägen Q4	

A	Alltjärvvägen D2	E	E	I	I	M	M	S	S
B	Bäckstuguvägen E5	F	F	J	J	N	N	O	O
C	C	F	F	J	J	N	N	O	O
D	D	F	F	J	J	N	N	O	O
E	E	F	F	J	J	N	N	O	O
F	F	F	F	J	J	N	N	O	O
G	G	F	F	J	J	N	N	O	O
H	H	F	F	J	J	N	N	O	O
I	I	F	F	J	J	N	N	O	O
J	J	F	F	J	J	N	N	O	O
K	K	F	F	J	J	N	N	O	O
L	L	F	F	J	J	N	N	O	O
M	M	F	F	J	J	N	N	O	O
N	N	F	F	J	J	N	N	O	O
O	O	F	F	J	J	N	N	O	O
P	P	F	F	J	J	N	N	O	O
Q	Q	F	F	J	J	N	N	O	O
R	R	F	F	J	J	N	N	O	O
S	S	F	F	J	J	N	N	O	O
T	T	F	F	J	J	N	N	O	O
U	U	F	F	J	J	N	N	O	O
V	V	F	F	J	J	N	N	O	O
W	W	F	F	J	J	N	N	O	O
X	X	F	F	J	J	N	N	O	O
Y	Y	F	F	J	J	N	N	O	O
Z	Z	F	F	J	J	N	N	O	O

VISITOR ATTRACTIONS

A glassworks is situated at Sättra Gärd in Bro. It is Sweden's most environmentally friendly glassworks and is run on biogas from Ragn-Sells waste-treatment plant Högytorp. Much of that which is manufactured at the glassworks is made from recycled glass. Ladan at Örakers gård offers activities in a rural environment. Those interested in horse racing can follow the events at Bro Park. Lillsjötpöten approximately 40 metres above Lillsjön, is a beautiful view point with a dam, waterfall and barbecue pit.

Kvistabergs observatorium is the oldest working observatory in Stockholm county, and is still situated in the location where it was constructed. It is a living research environment in a built environment with a character preserved from the early 20th century. The municipality has many beautiful mansions from different eras. Most of them are currently run as conference facilities. Fiskartorp at Brogårds brygga is a well-preserved crafts holding from the 19th century. More visitor attractions can be found at www.upplands-bro.se.

CULTURE ENVIRONMENTS

Upplands-Bro has six churches, one in each parish. Håbo-Tibble church is the oldest, built as early as in the 12th century. The interiors of the church is covered by Medieval paintings, made by artists associated with Albertus Pictor's school in the 15th century. Next to the church a village has sprung, designed by landscape architect Sven Olov Nyberg who wanted to build a modern village adapted to nature and the different needs of the people. The buildings, turned towards the sun, are of varied colour and design. The municipality has eight ancient forts, more than 4,000 burial mounds and a large number of rune stones that speak of an environment settled since ancient times.

The rune stone **Assurstenen** just north of Bro church tells us about Assur, a man of importance in the area. A large burial mound in the area also carries his name. The stone says that his wife Gimnig established a bridge in his memory. It is this bridge that is the origin of the name Bro in the parish and municipality. Fornstuguna (now Sighildsberg) have, along with Helgo in Mälaren, the largest number of preserved terraces for building foundations in the entirety of Mälardalen. There was a chieftain's farm long before Birka and Sigtuna existed. St Erik borg on Stäkesholmen played an important part in Swedish history during the Middle Ages and up until Stockholm Bloodbath in 1520. The person who was master of the fort had overview and control over one of the kingdom's most important fairways, towards the cities of Sigtuna and Uppsala.

An area with plenty of ancient monuments is Låssa. Here is the cult site Rösäng, which is one of the country's biggest labyrinth with large burial mounds and a unique stone lined procession route. Draget is an ancient junction on the border between Håbo municipality and Upplands-Bro. The strategic land connection was protected by an ancient fort. Just east of Kungsängen, the deep Ryssgraven and the steep slope offers and insight into road constructions techniques throughout the ages. In order to be able to get out of Ryssgraven with a carriage, a road embankment was established over the waterlogged isthmus and the 200 metre long stone wall that became the foundation for the first Dalkarlsbacken was built. Here is a road museum out in the nature, from the time before the motorway.



THE RIGHT OF PUBLIC ACCESS – IF YOU SHOW CONSIDERATION

The Right of Public Access, unique to Sweden gives us fantastic opportunities for roaming freely in nature. The prerequisite for the right of public access is the responsibility of public access - that we show consideration to the flora, fauna and other humans. All inhabitants of the forest, both humans and animals have the right to peace. If you bring a dog you must supervise it. Between 1 March - 20 August when the animals of the forest are rearing their young, you should have your dog on a lead. There are also animals and plants that are protected.

- We are allowed to**
- walk and ski on someone else's land outside the property grounds
 - travel freely over someone else's waters
 - pick wild flowers, berries and mushrooms outside property grounds
 - camp for 24 hours, but not too close to someone's home
 - make a fire outside property grounds if it can be made without a fire hazard and with permitted fuel
 - walk and cycle on a private road
- We are not allowed to**
- damage the ground, trees, bushes or crops
 - without permission travel over property grounds or plantation or someone else's property that may be damaged
 - use letters, buoy, well or other facility that belongs to another person
 - litter
 - make a noise through loud music etc.
 - take birds' nests or eggs
 - fish or hunt without a permit
 - make a fire when there is a fire hazard

There are special regulations for protected nature. These may infringe the right to public access, it is therefore important to read the reserve signs thoroughly.



BOATING, LAKES AND ARCHIPELAGO

The proximity to Mälaren makes the water an important resource for both business and pleasure. The water mirrors of the summer and ice of the winter attracts people to outdoor activities. The right to public access applies on the water too and consideration of nature is of great importance. The municipality has around 50 islands with inviting to spontaneously anchor in an environment of natural beauty. Remember that Mälaren is Stockholm's reservoir for drinking water. In Norra Björkfjärden nature reserve there is a popular sandy beach on Västra Högholmen where the municipality maintains the public toilets and collect waste bins. Several other islands have some service that is maintained by private boat clubs.

Approximately 1.7 million people in Stockholm county receives their drinking water from East Mälaren water protection area. In Upplands-Bro municipality the municipal drinking water comes from Norrvattens waterworks at Görvaln. Raw water is taken from Mälaren and is purified in the waterworks to become drinking water.

The fact that East Mälaren is classified as a water protection area means that everyone who lives and works in the area must be particularly careful with the water.

The municipality maintains the toilets and waste collection facilities at Västra Högholmen, several other islands have amenities maintained by private boat clubs.

Free fishing in Mälaren In Mälaren, everyone has the right to fish with hand tools, even on private waters. Hand tools are fishing rods, casting rods, jigs and similar tools that are equipped with a line and a maximum of ten hooks. It is allowed to fish from land and with a boat but the fishing method as such must not require the use of a boat.

Örnäsåsjön, Lillsjön and Lejondalsjön has permitted fishing angling, that is, fishing with worms, float and top attached line is allowed in these lakes with access from the municipal beaches. Free hand tool fishing is otherwise not allowed in these lakes. There are also opportunities here for fishing with other tools on leasehold waters. This requires membership in Bro and Kungsängens Sportfiskeklubb or a valid fishing licence. For more information on fishing licences, visit www.upplands-bro.se

Timeline:

- Approximately 5000 B.C.: The first lakes and swamps break the water surface above the inland for records, etc. The island for records, etc. get each Rösäng.
- Stone Age: Someone dropped a stone axe at Orsta.
- Bronze Age: The bronze axe at Rösäng was established near.
- Approximately 500 B.C.: The "Granhammar Man" is registered as Upplands-Bro in the first written record in the form of a wood grain hammer.
- A.D.: Approximately 700-1100 A.D.: Erikhammarsgubben ligger ner i grav vid Bruma.
- 1308: Hällkarnen.
- 1517: The first oak forest, Dalkarlsbacken is built by the Dal Regiment.
- 1753: The most southern established at Lejondals farm.
- 1802: The first oak forest, Dalkarlsbacken is built by the Dal Regiment.
- 1812: The construction of Villa Åke is started. It is today a listed building.
- 1912: Bro IK is established the same year as the Stockholm Olympics.
- 1932: Upplands-Bro municipality is founded in the great municipal consolidation.
- 1932: The 85th birthday of Upplands-Bro is celebrated in the town.
- 1933: The Granhammar Man is found when digging a ditch near Granhammar castle.
- 1937: The parish and church in Stockholm-Mås changes its name to Kungsängen.
- 1988: Erikhammarsgubben is registered as Upplands-Bro in the municipal coat of arms.
- 1988: Commuter train to Kungsängen.
- 1988: The first nature reserve Norra Björkfjärden nature-reserve.
- 1970: Svenska Gläddor move to Kungsängen.
- 1973: Bro centrum is inaugurated.
- 1971: Upplands-Bro is transferred from Kungsängen to Stockholm county.
- 1983: Erikhammarsgubben is registered as Upplands-Bro in the municipal coat of arms.
- 1982: Bro centrum is devastated by a fire.
- 1989: The first vikingermuseum is run.
- 2001: New commuter station is inaugurated in Bro.
- 2010: New indoor football hall is inaugurated in Bro.
- 2014: Kungsängens sports grounds are inaugurated.
- 2014: New culture centre is inaugurated in Kungsängen.
- 2017: New stables for Upplands-Bro riding school inaugurated.
- 2017: The population of Upplands-Bro is 57,000 inhabitants.
- 2036: Vision

